



genesis
NP

**NP9-12
NP9-12FR**

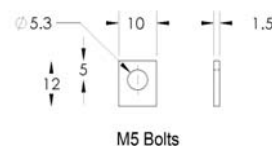
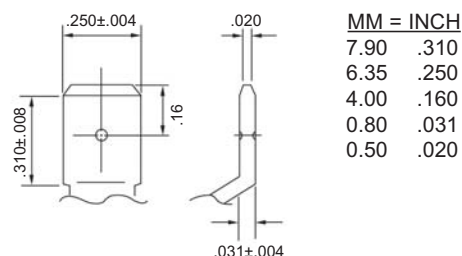
**Sealed Rechargeable
Lead-Acid Battery**

12V, 9.0Ah

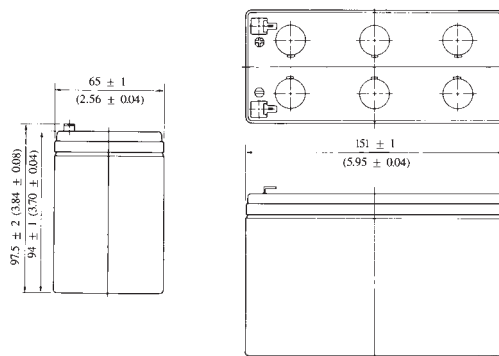
Specifications

- **NOMINAL VOLTAGE:** 12V
- **NOMINAL CAPACITY:**
 - 20 hr. rate to 10.5V 0.45A to 10.5V 9.0Ah
 - 10 hr. rate to 10.5V 0.85A to 10.5V 8.5Ah
 - 5 hr. rate to 10.2V 1.53A to 10.2V 7.65Ah
 - 15 min. rate to 1.67Vpc 36
- **ENGINE START SPECIFICATIONS:**
 - CCA 30 seconds at 0°F 110A
 - CA 30 seconds at 32°F 175A
- **WEIGHT (approx.):** 6.15 pounds (2.80 kgs.)
- **ENERGY DENSITY (20 hr. rate):** 113.9 WH/litre
- **SPECIFIC ENERGY (20 hr. rate):** 17.7 WH/litre
- **INTERNAL RESISTANCE OF CHARGED BATTERY:** 14.5 milliohms (approx.)
- **MAXIMUM SHORT-DURATION DISCHARGE CURRENT:** 135 amperes
- **OPERATING TEMPERATURE RANGE:**
 - CHARGE -15°C to 40°C (5°F to 104°F)
 - DISCHARGE -15°C to 50°C (5°F to 122°F)
 - STORAGE -15°C to 40°C (5°F to 104°F)
- **CHARGE RETENTION (shelf life) at 20°C (68°F):**
 - 1 month 98%
 - 3 months 94%
 - 6 months 85%
- **LIFE EXPECTANCY:**
 - STANDBY USE** 3 to 5 years at 20°C (68°F)
 - CYCLE USE (approx.):**
 - 100% depth of discharge 200 cycles
 - 50% depth of discharge 500 cycles
 - 30% depth of discharge 1000 cycles
- **SEALED CONSTRUCTION:** Can be operated in any position without leakage.
- **STANDARD TERMINAL:** .250 Terminal or Optional M5 Bolt
- **HOUSING MATERIAL:** ABS Resin
- **OPTIONAL:** Container and cover made from Flame Retardant ABS (UL94-V0/L.O.I.>28%)

Terminals



Dimensions



DIMENSIONS: MM (INCHES)

*Bolt height 106 ± 1 (4.17 ± 0.04)

UL Listing pending - File No MH16464

DISTRIBUIDOR:



PLAYA SUR No. 20 INT. 2
COL. MILITAR MARTE
08830 IZTACALCO MEXICO, D.F.
TEL. 7090-7088 Y 7090-7089
ventas@regulacionups.com.mx
www.regulacionups.com.mx

EnerSys[®]

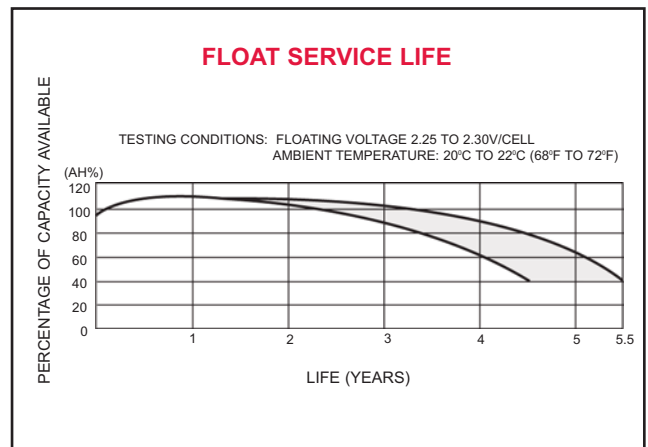
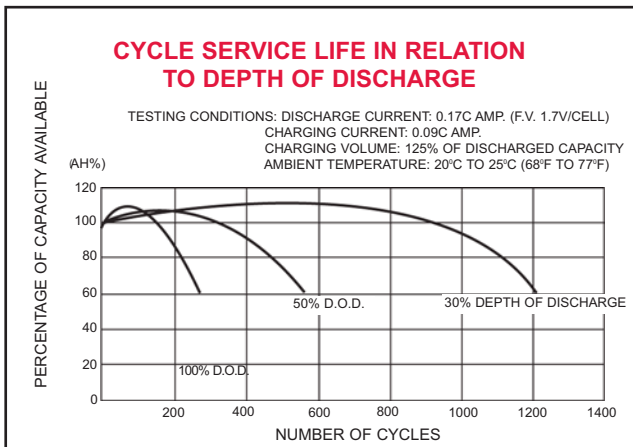
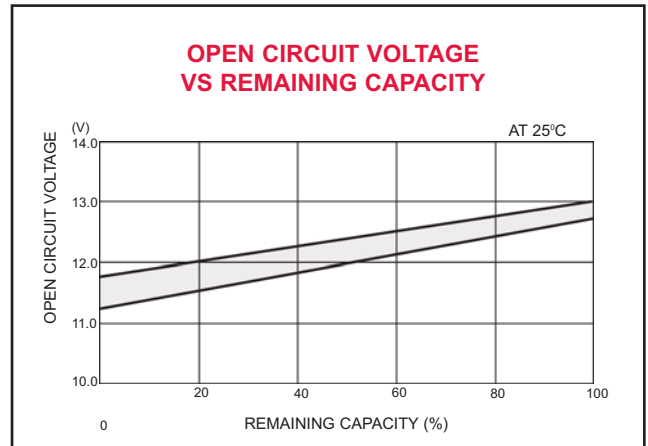
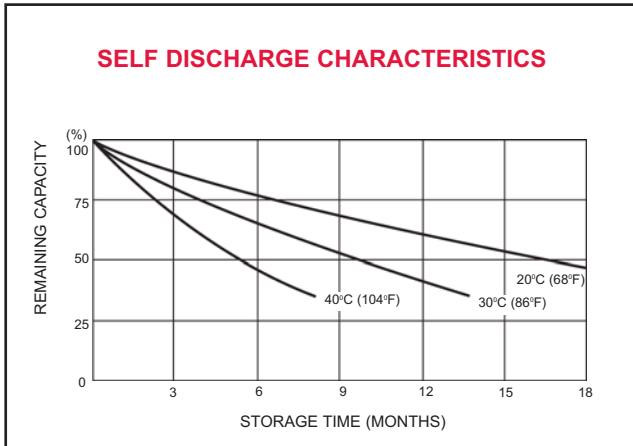
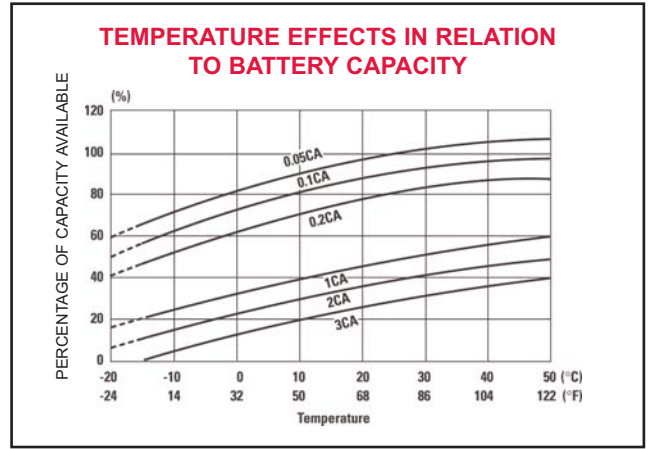
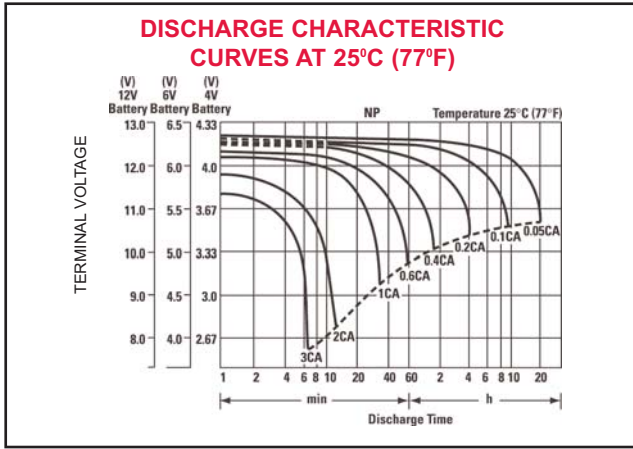
Power/Full Solutions

RESERVE
POWER



Preliminary Version • Publication No: US-NP9-12-01 • May 2012

www.regulacionups.com.mx



When the battery will be used by current in excess of 3C, consult with EnerSys prior to use.

CHARGING METHODS (At 20°C)

Cycle use: Maximum charging current 1.75A
Charging voltage 14.4 to 15.0V

CAUTION

- Avoid short circuit
- Do not charge in a sealed container.

Standby use: Float charging voltage 13.50 to 13.80V



EnerSys
2366 Bernville Road
Reading, PA 19605
USA
Tel: +1-610-208-1991
+1-800-538-3627

EnerSys EMEA
Zurich, Switzerland
Tel: +41 (0) 44 215 74 10

EnerSys Asia
Singapore
Tel: +65 6508 1780

www.regulacionups.com.mx

Represented by:

DISTRIBUIDOR:



**PLAYA SUR No. 20 INT. 2
COL. MILITAR MARTE
08830 IZTACALCO MEXICO, D.F.
TEL. 7090-7088 Y 7090-7089
ventas@regulacionups.com.mx
www.regulacionups.com.mx**