



NP55-12R NP55-12RFR

Sealed Rechargeable
Lead-Acid Battery

12V, 55.0Ah

Specifications

- **NOMINAL VOLTAGE:** 12V
- **NOMINAL CAPACITY:**

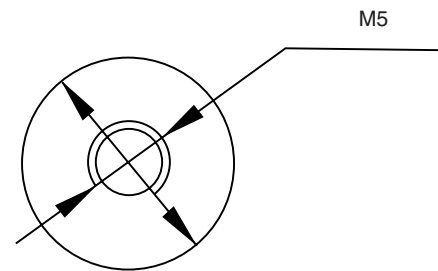
20 hr. rate of 2.75A to 10.5V	55.0Ah
10 hr. rate of 4.95A to 10.5V	49.5Ah
5 hr. rate of 8.80A to 10.2V	44.0Ah
1 hr. rate of 33.0A to 9.60V	33.0Ah
- **WEIGHT (approx.):** 40.1 pounds (18.2kgs)
- **ENERGY DENSITY (20 hr. rate):** 1.50 WH/cubic inch (92 WH/liter)
- **SPECIFIC ENERGY (20 hr. rate):** 16.5 WH/pound (36.3 WH/kg)
- **INTERNAL RESISTANCE OF CHARGED BATTERY:** 10.0 milliohms (approx.)
- **MAXIMUM DISCHARGE CURRENT WITH STANDARD TERMINALS:** 150 amperes
- **MAXIMUM SHORT-DURATION DISCHARGE CURRENT:** 500 amperes
- **OPERATING TEMPERATURE RANGE:**

CHARGE	5°F to 122°F	(-15°C to 50°C)
DISCHARGE	-4°F to 140°F	(-20°C to 60°C)
- **CHARGE RETENTION (shelf life) at 68°F (20°C):**

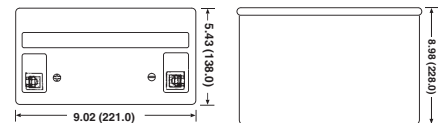
1 month	97%
3 months	91%
6 months	85%
- **LIFE EXPECTANCY:**

STANDBY USE	3 to 5 years
CYCLE USE (approx.):	
100% depth of discharge	250 cycles
50% depth of discharge	550 cycles
30% depth of discharge	1200 cycles
- **SEALED CONSTRUCTION:** Can be operated in any position without leakage.
- **STANDARD TERMINAL:** Receptacle terminal
- **HOUSING MATERIAL:** PP Resin
- **OPTIONAL:** Container and cover made from Flame Retardant PP (UL94-V0/L.O.I.>28%)

Terminal



Dimensions



DIMENSIONS: INCHES (MM)

UL listing pending - File No MH14328

www.regulacionups.com.mx



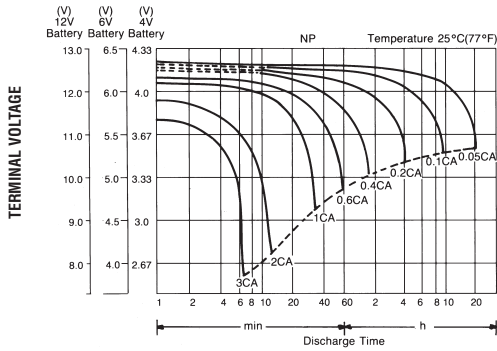
DISTRIBUIDOR:



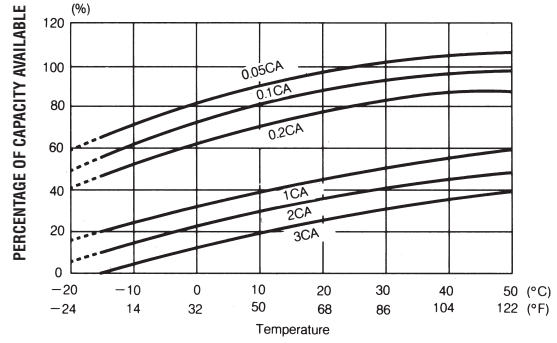
REGULACIÓN Y SISTEMAS DE ENERGÍA

PLAYA SUR No. 20 INT. 2
COL. MILITAR MARTE
08830 IZTACALCO MEXICO, D.F.
TEL. 7090-7088 Y 7090-7089
ventas@regulacionups.com.mx
www.regulacionups.com.mx

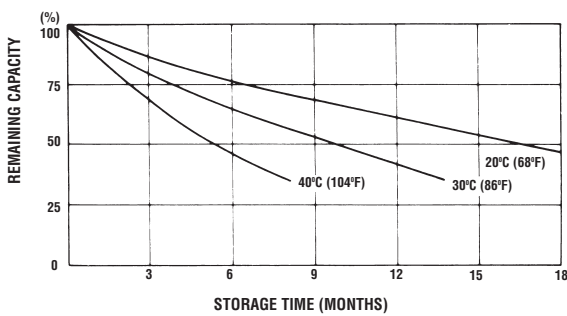
DISCHARGE CHARACTERISTIC CURVES AT 25°C (77°F)



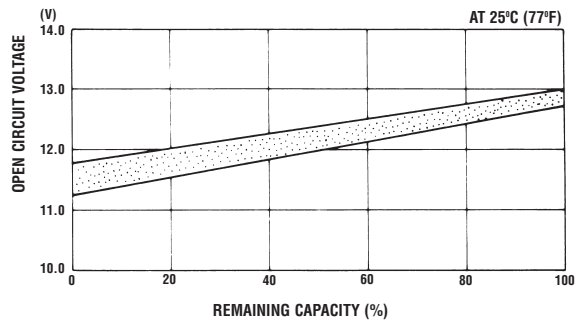
TEMPERATURE EFFECTS IN RELATION TO BATTERY CAPACITY



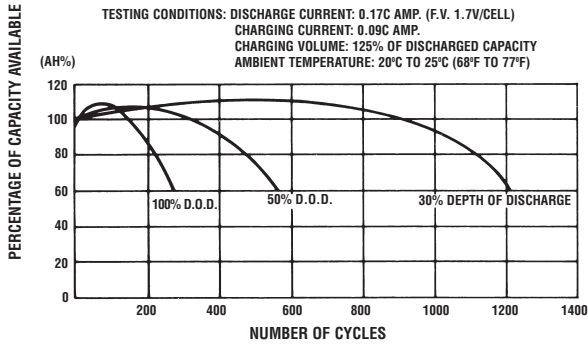
SELF DISCHARGE CHARACTERISTICS



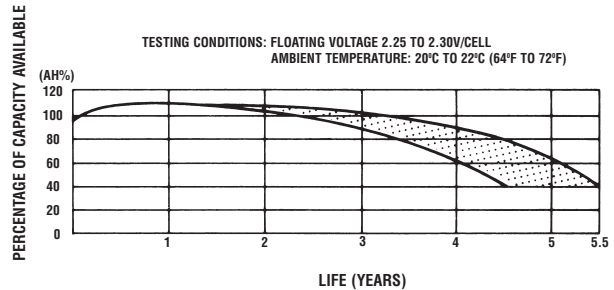
OPEN CIRCUIT VOLTAGE VS REMAINING CAPACITY



CYCLE SERVICE LIFE IN RELATION TO DEPTH OF DISCHARGE



FLOAT SERVICE LIFE



When the battery will be used by current in excess of 3C, consult with EnerSys prior to use.

CHARGING METHODS (At 20°C)

Cycle use: Maximum charging current 0.25C
Charging voltage 14.4 to 15.0V

Standby use: Float charging voltage 13.50 to 13.80V

CAUTION

- Avoid short circuit
- Do not charge in a sealed container.



EnerSys
P.O. Box 14145
Reading, PA 19612-4145
USA
Tel: +1-610-208-1991
+1-800-538-3627

EnerSys EMEA
Brussels, Belgium
Tel: +32 (0)2 247 94 47
EnerSys Asia
Guandong, China
Tel: +86 755 689 9220

Represented by:

DISTRIBUIDOR:



PLAYA SUR No. 20 INT. 2
COL. MILITAR MARTE
08830 IZTACALCO MEXICO, D.F.
TEL. 7090-7088 Y 7090-7089
ventas@regulacionups.com.mx
www.regulacionups.com.mx