



NP3-6

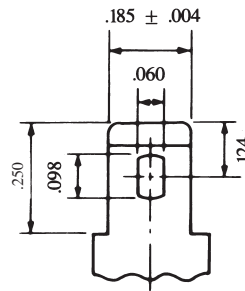
Sealed Rechargeable
Lead-Acid Battery

6V, 3.0Ah

Specifications

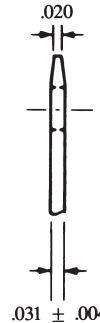
- **NOMINAL VOLTAGE:** 6V
- **NOMINAL CAPACITY:**
 - 20 hr. rate of .15A to 5.25V 3.0Ah
 - 10 hr. rate of .28A to 5.25V 2.8Ah
 - 5 hr. rate of .52A to 5.10V 2.6Ah
 - 1 hr. rate of 1.80A to 4.80V 1.8Ah
- **WEIGHT (approx.):** 1.43 pounds (0.65 kgs.)
- **ENERGY DENSITY (20 hr. rate):** 1.08 WH/cubic inch (66 WH/liter)
- **SPECIFIC ENERGY (20 hr. rate):** 12.6 WH/pound (28 WH/kg)
- **INTERNAL RESISTANCE OF CHARGED BATTERY:** 30 milliohms (approx.)
- **MAXIMUM DISCHARGE CURRENT WITH STANDARD TERMINALS:** 40 amperes
- **MAXIMUM SHORT-DURATION DISCHARGE CURRENT:** 100 amperes
- **OPERATING TEMPERATURE RANGE:**
 - CHARGE 5°F to 122°F (-15°C to 50°C)
 - DISCHARGE -4°F to 140°F (-20°C to 60°C)
- **CHARGE RETENTION (shelf life) at 68°F (20°C):**
 - 1 month 97%
 - 3 months 91%
 - 6 months 85%
- **LIFE EXPECTANCY:**
 - STANDBY USE 3 to 5 years
 - CYCLE USE (approx.):
 - 100% depth of discharge 250 cycles
 - 50% depth of discharge 550 cycles
 - 30% depth of discharge 1200 cycles
- **SEALED CONSTRUCTION:** Can be operated, charged or stored in any position without leakage.
- **STANDARD TERMINAL:** Quick Disconnect .187
- **HOUSING MATERIAL:** ABS Resin

Terminal



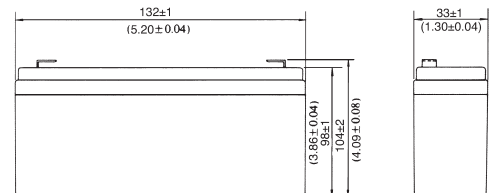
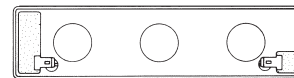
INCH = MM

.250	6.35
.185	4.70
.124	3.15
.098	2.49
.060	1.52
.031	0.79
.020	0.51
.004	0.10



DIMENSIONS: INCHES

Dimensions



www.regulacionups.com.mx

DISTRIBUIDOR:



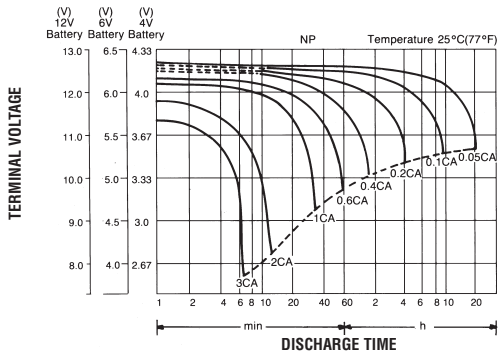
REGULACIÓN Y SISTEMAS DE ENERGÍA

PLAYA SUR No. 20 INT. 2
COL. MILITAR MARTE
08830 IZTACALCO MEXICO, D.F.
TEL. 7090-7088 Y 7090-7089
ventas@regulacionups.com.mx
www.regulacionups.com.mx

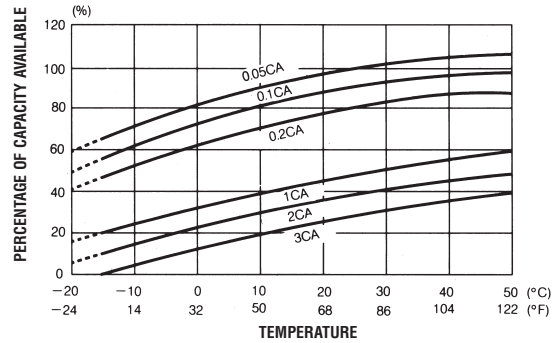
EnerSys[™]

Power/Full Solutions[™]

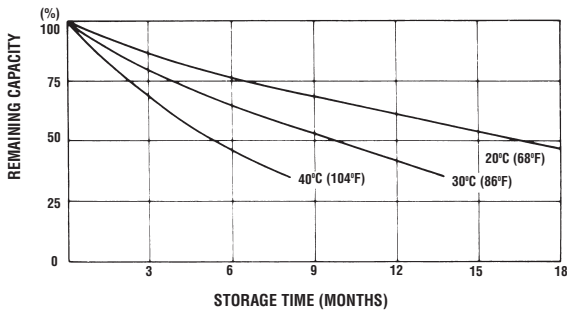
DISCHARGE CHARACTERISTIC CURVES AT 25°C (77°F)



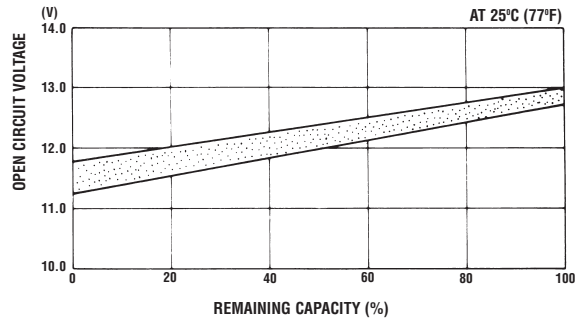
TEMPERATURE EFFECTS IN RELATION TO BATTERY CAPACITY



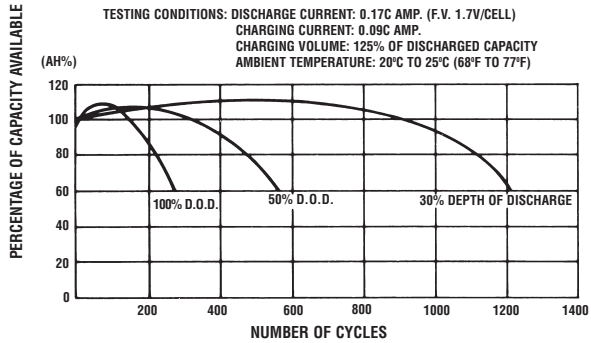
SELF DISCHARGE CHARACTERISTICS



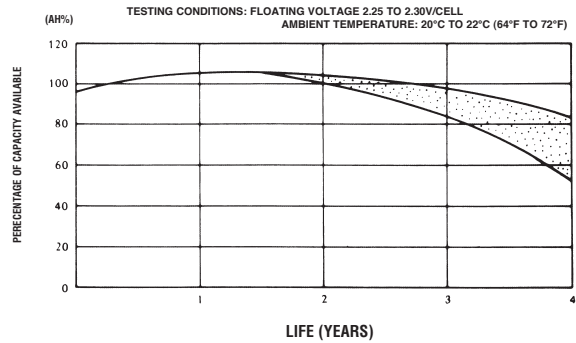
OPEN CIRCUIT VOLTAGE VS REMAINING CAPACITY



CYCLE SERVICE LIFE IN RELATION TO DEPTH OF DISCHARGE



FLOAT SERVICE LIFE



When the battery will be used by current in excess of 3C, consult with EnerSys Inc. prior to use.

CHARGING METHODS (At 20°C)

Cycle use: Maximum charging current 0.75A
Charging voltage 7.2 to 7.5V
Standby use: Float charging voltage 6.75 to 6.90V

CAUTION

- Avoid short circuit
- Do not charge in a sealed container.



DISTRIBUIDOR:



REGULACIÓN Y SISTEMAS DE ENERGÍA

PLAYA SUR No. 20 INT. 2
COL. MILITAR MARTE
08830 IZTACALCO MEXICO, D.F.
TEL. 7090-7088 Y 7090-7089
ventas@regulacionups.com.mx
www.regulacionups.com.mx

www.regulacionups.com.mx