



## NP18-12R NP18-12RFR

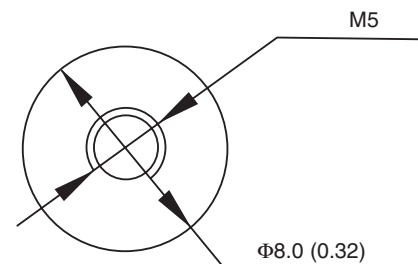
Sealed Rechargeable  
Lead-Acid Battery

### 12V, 17.2Ah

### Specifications

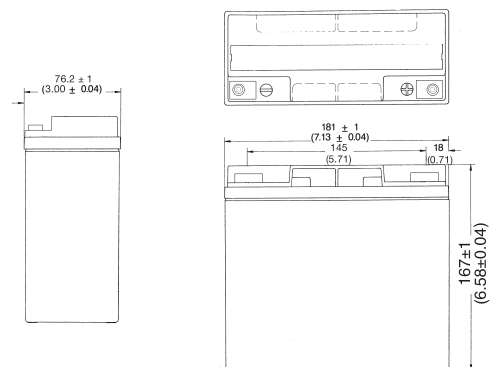
- **NOMINAL VOLTAGE:** 12V
- **NOMINAL CAPACITY:**
  - 20 hr. rate of 0.86A to 10.5V 17.2Ah
  - 10 hr. rate of 1.6A to 10.5V 16.0Ah
  - 5 hr. rate of 2.9A to 10.2V 14.5Ah
  - 1 hr. rate of 10.3A to 9.60V 10.3Ah
- **WEIGHT (approx.):** 13.36 pounds (6.06 kgs.)
- **ENERGY DENSITY (20 hr. rate):** 1.47 WH/cubic inch (90 WH/liter)
- **SPECIFIC ENERGY (20 hr. rate):** 15.4 WH/pound (34.1 WH/kg)
- **INTERNAL RESISTANCE OF CHARGED BATTERY:** 15 milliohms (approx.)
- **MAXIMUM DISCHARGE CURRENT WITH STANDARD TERMINALS:** 150 amperes
- **MAXIMUM SHORT-DURATION DISCHARGE CURRENT:** 450 amperes
- **OPERATING TEMPERATURE RANGE:**
  - CHARGE 5°F to 122°F (-15°C to 50°C)
  - DISCHARGE -4°F to 140°F (-20°C to 60°C)
- **CHARGE RETENTION (shelf life) at 68°F (20°C):**
  - 1 month 97%
  - 3 months 91%
  - 6 months 85%
- **LIFE EXPECTANCY:**
  - STANDBY USE** 3 to 5 years
  - CYCLE USE (approx.):**
    - 100% depth of discharge 250 cycles
    - 50% depth of discharge 550 cycles
    - 30% depth of discharge 1200 cycles
- **SEALED CONSTRUCTION:** Can be operated in any position without leakage.
- **STANDARD TERMINAL:** Receptacle terminal
- **HOUSING MATERIAL:** ABS Resin
- **OPTIONAL:** Container and cover made from Flame Retardant ABS (UL94-V0/L.O.I.>28%)
- **HARDWARE:**
  - 2-M5 x 12mm Bolts w/ (2) lock washers - (5mm) & (2) flat washers - (5mm)

### Terminal



DIMENSIONS: MM (INCHES)

### Dimensions



DIMENSIONS: MM (INCHES)

UL listing pending - File No MH16464

**EnerSys™**  
Power/Full Solutions

DISTRIBUIDOR:



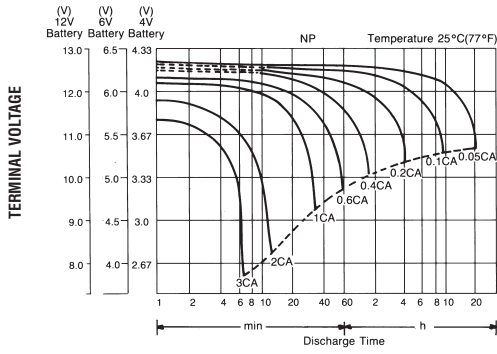
PLAYA SUR No. 20 INT. 2  
COL. MILITAR MARTE  
08830 IZTACALCO MEXICO, D.F.  
TEL. 7090-7088 Y 7090-7089  
ventas@regulacionups.com.mx  
www.regulacionups.com.mx



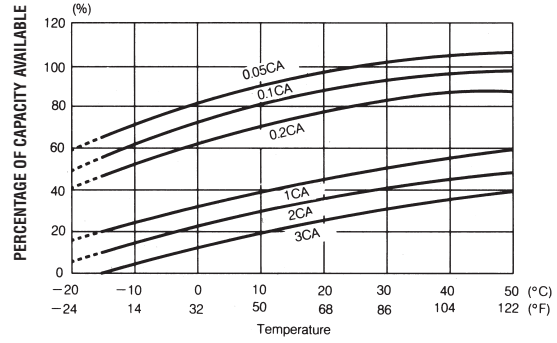
Publication No: EN-NP18-12R-01 • August 2005

[www.regulacionups.com.mx](http://www.regulacionups.com.mx)

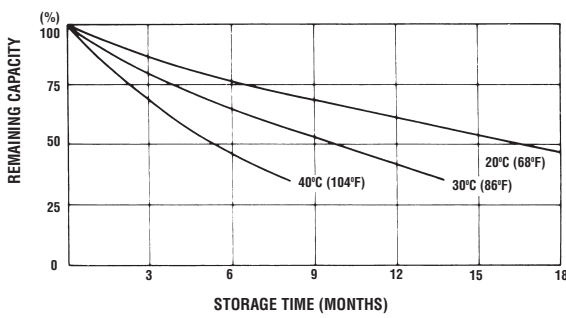
### DISCHARGE CHARACTERISTIC CURVES AT 25°C (77°F)



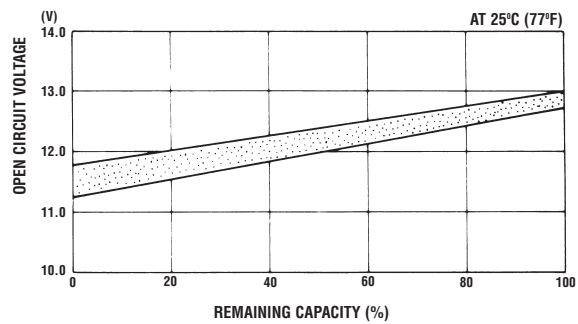
### TEMPERATURE EFFECTS IN RELATION TO BATTERY CAPACITY



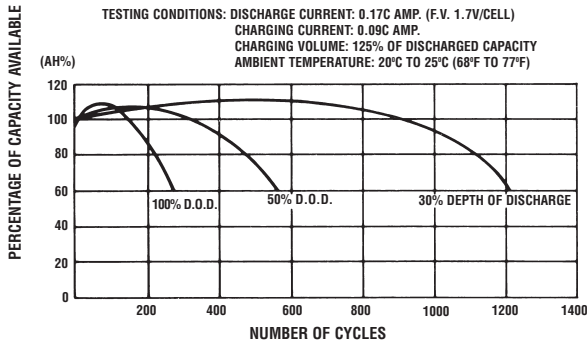
### SELF DISCHARGE CHARACTERISTICS



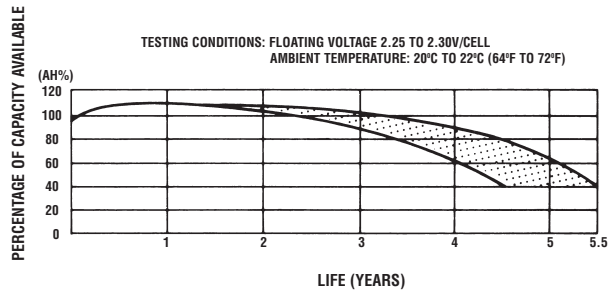
### OPEN CIRCUIT VOLTAGE VS REMAINING CAPACITY



### CYCLE SERVICE LIFE IN RELATION TO DEPTH OF DISCHARGE



### FLOAT SERVICE LIFE



When the battery will be used by current in excess of 3C, consult with EnerSys prior to use.

#### CHARGING METHODS (At 20°C)

**Cycle use:** Maximum charging current 4.3A  
Charging voltage 14.4 to 15.0V

**Standby use:** Float charging voltage 13.50 to 13.80V

#### CAUTION

- Avoid short circuit
- Do not charge in a sealed container.



www.enersys.com

**EnerSys**  
P.O. Box 14145  
Reading, PA 19612-4145  
USA  
Tel: +1-610-208-1991  
+1-800-538-3627

**EnerSys EMEA**  
Brussels, Belgium  
Tel: +32 (0)2 247 94 47  
**EnerSys Asia**  
Guandong, China  
Tel: +86 755 689 9220

#### DISTRIBUIDOR:



REGULACIÓN Y SISTEMAS DE ENERGÍA

PLAYA SUR No. 20 INT. 2  
COL. MILITAR MARTE  
08830 IZTACALCO MEXICO, D.F.  
TEL. 7090-7088 Y 7090-7089  
ventas@regulacionups.com.mx  
www.regulacionups.com.mx

© 2005 EnerSys. All rights reserved.  
Trademarks are the property of EnerSys and its affiliates unless otherwise noted.

www.regulacionups.com.mx